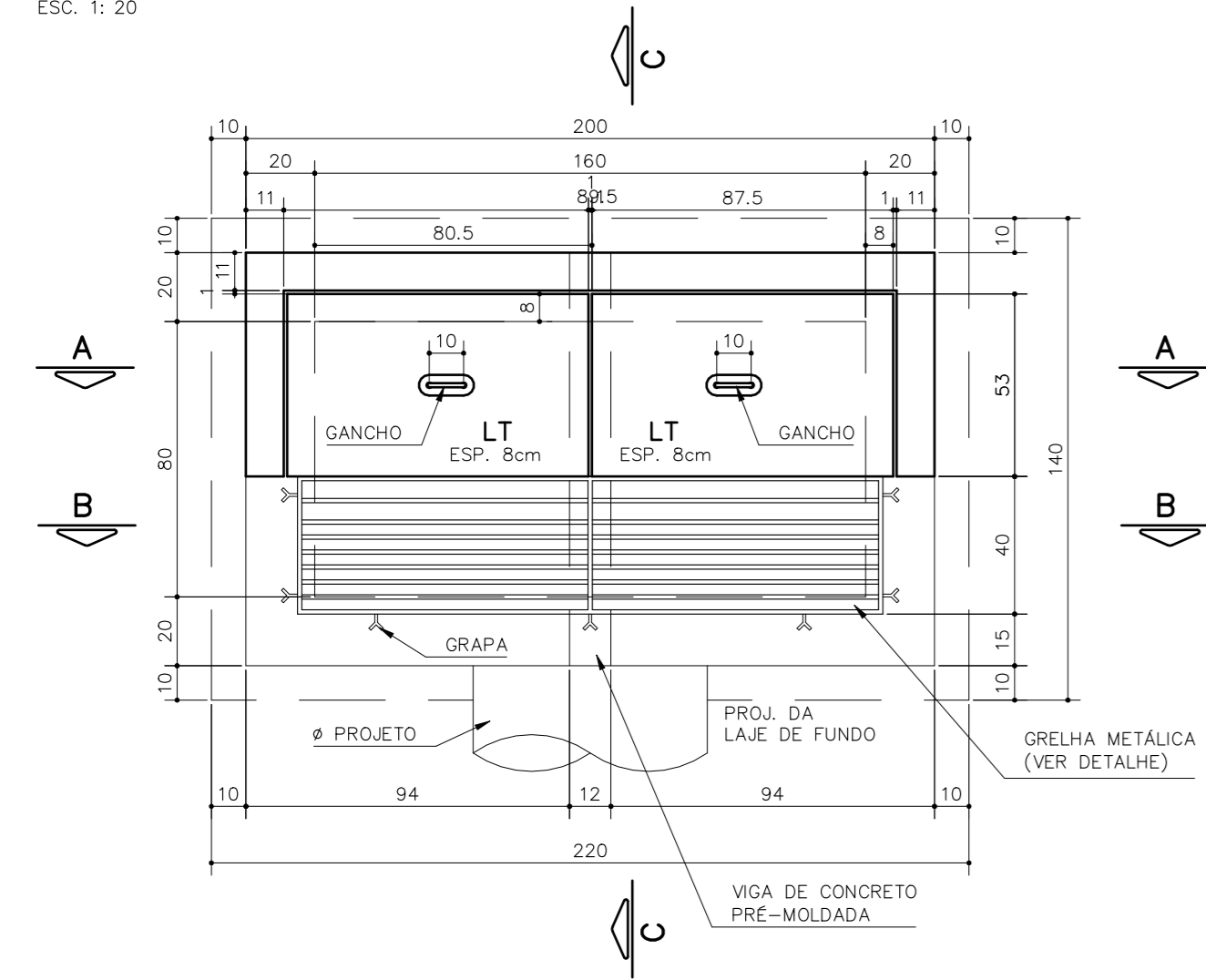
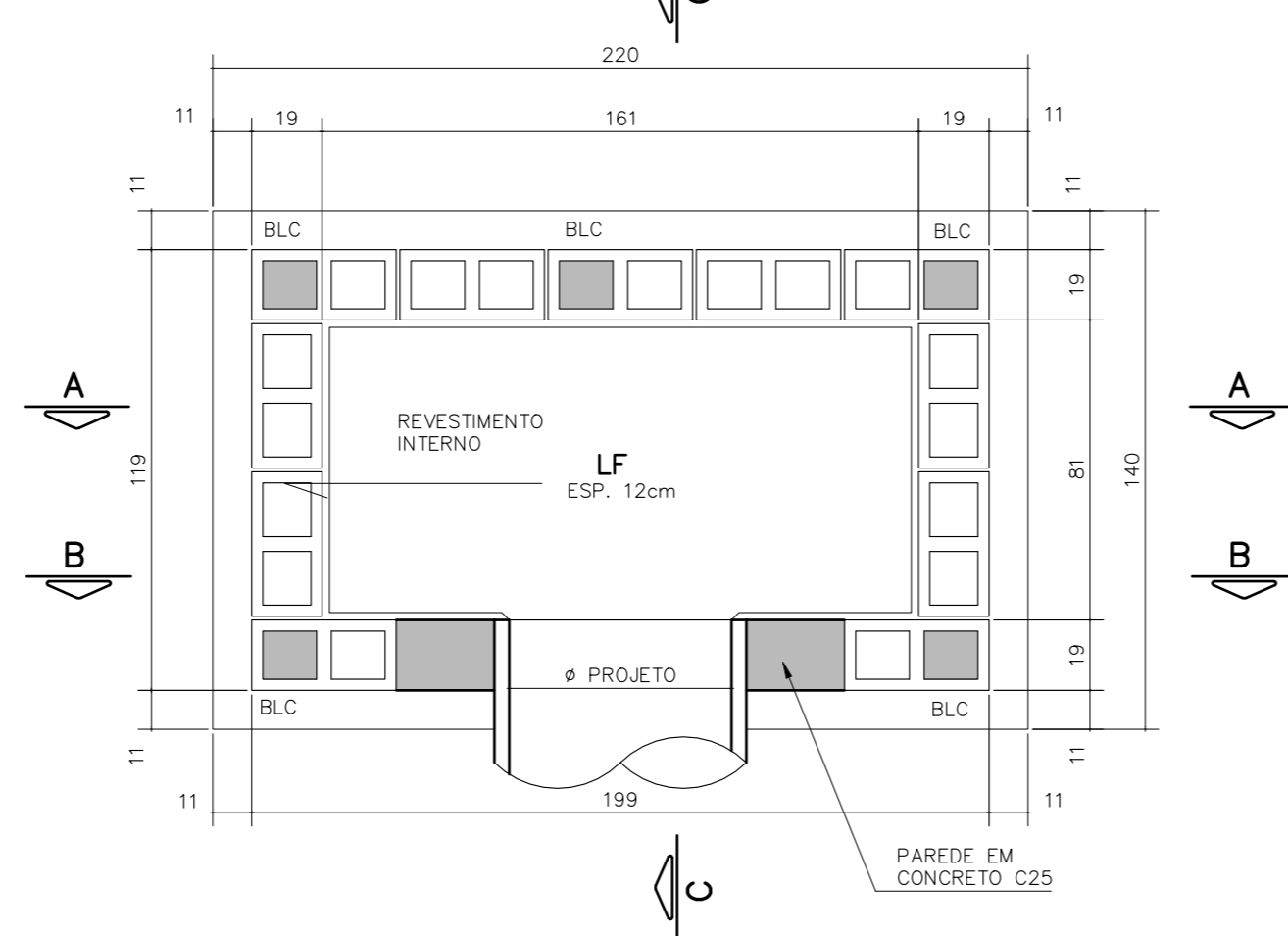


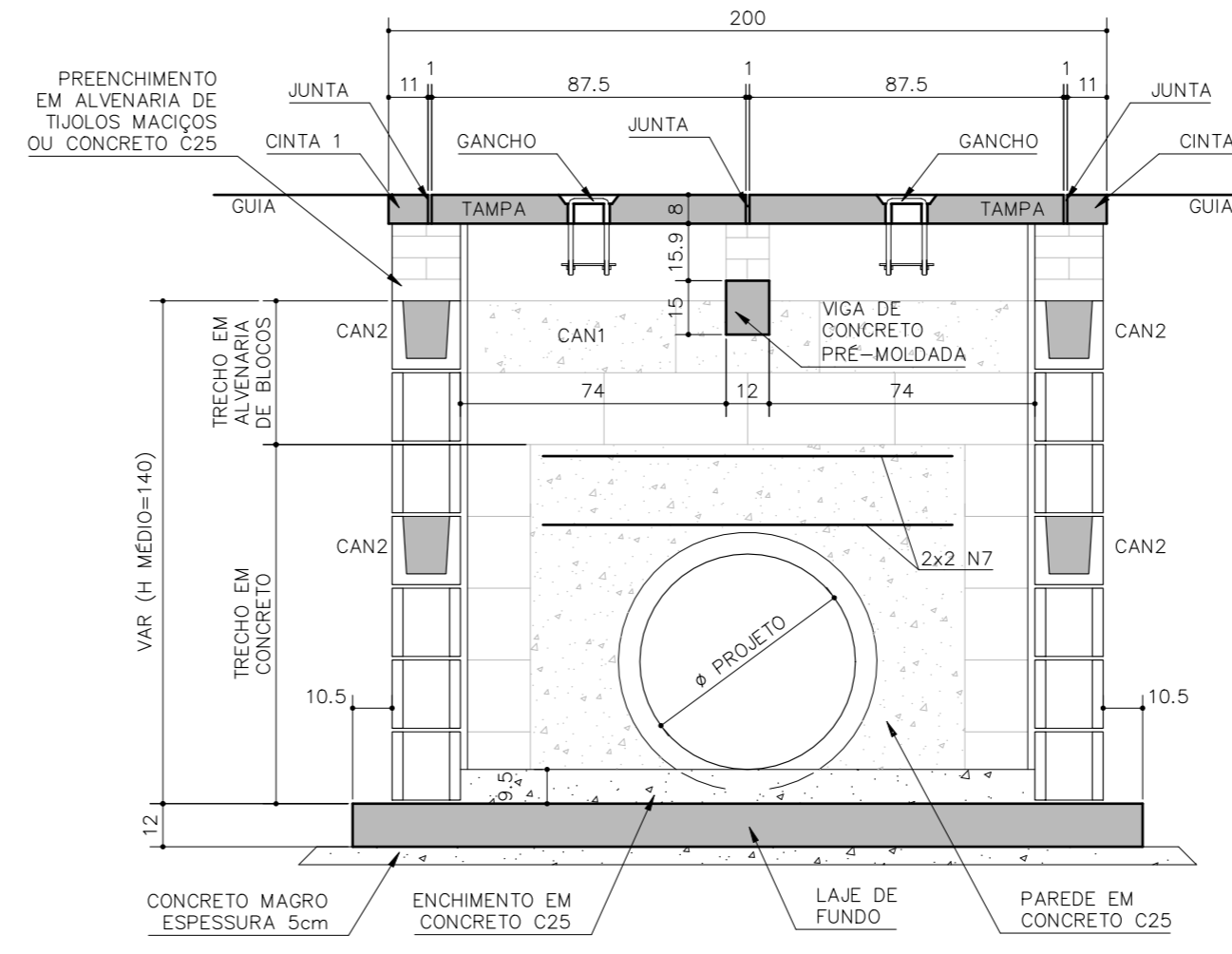
BOCA DE LOBO DUPLA (BLD) – (37x)
PLANTA DE TOPO



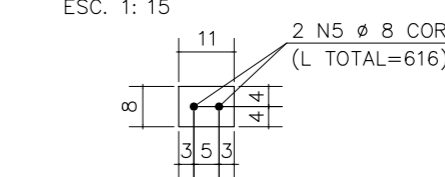
PLANTA DE FUNDO
ESC. 1: 20



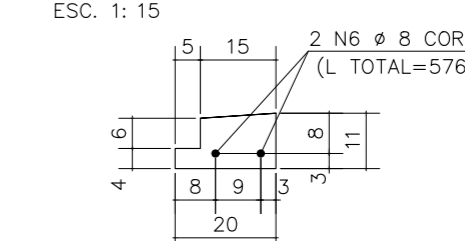
CORTE A-A
ESC. 1: 20



ARMADURA DA CINTA 1
ESC. 1: 15



ARMADURA DA CINTA 2
ESC. 1: 15

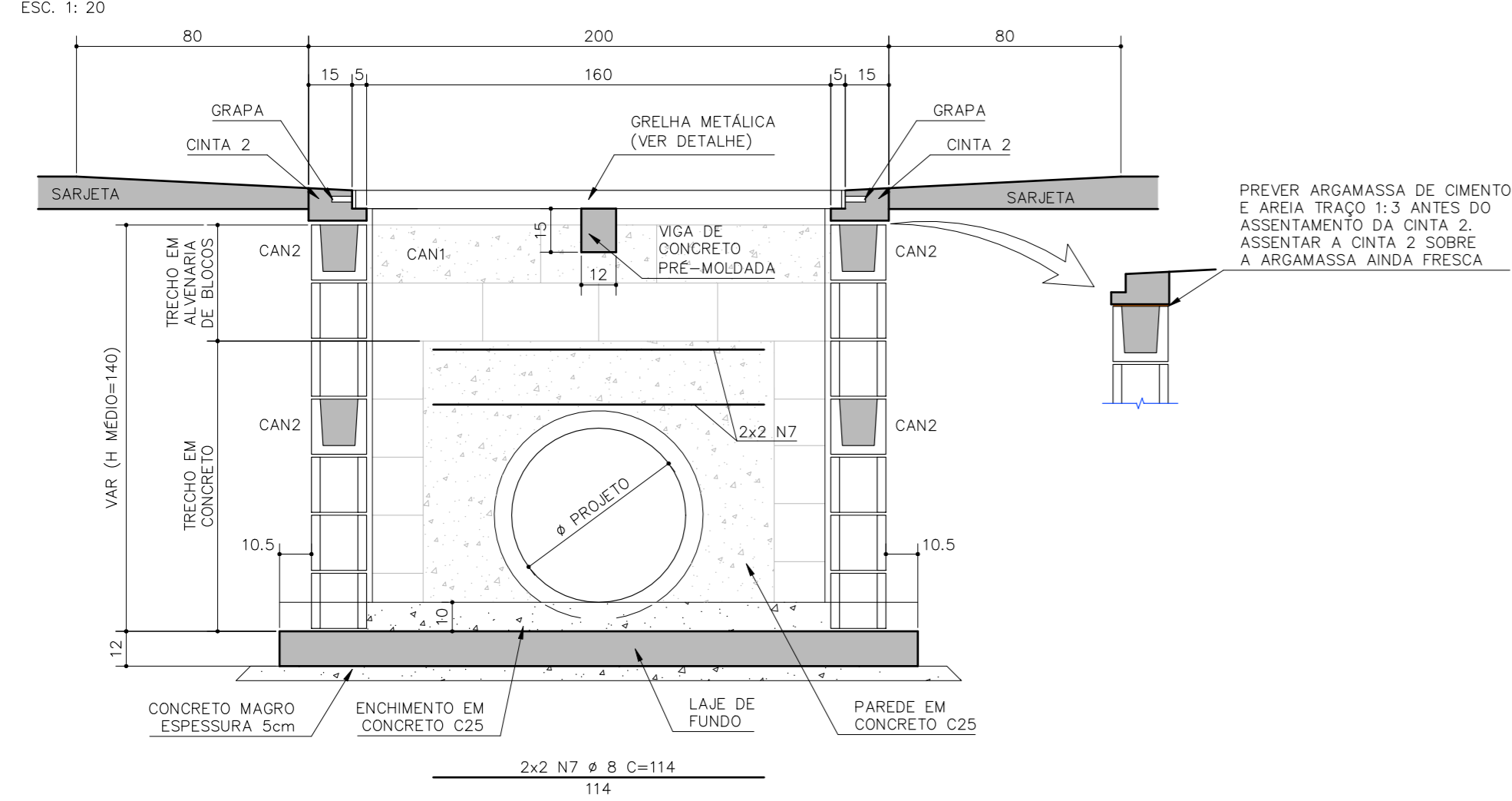


ELEMENTO	N	Ø	QUANT.	COMP. UNIT.	COMP. TOTAL
BLD	1	6.3	20	226	4520
	2	6.3	30	146	4380
	3	6.3	8	82	656
	4	6.3	16	47	752
	5	8	2	CORR	616
	6	8	2	CORR	576
	7	8	4	114	456
	8	5	11	71	781
	9	8	20	72	1440
	10	8	20	137	2740
	11	6.3	12	193	2316
	12	5	33	51	1683
	13	6.3	16	73	1168
	14	5	20	51	1020
	15	10	4	132	528
	16	5	13	40	520

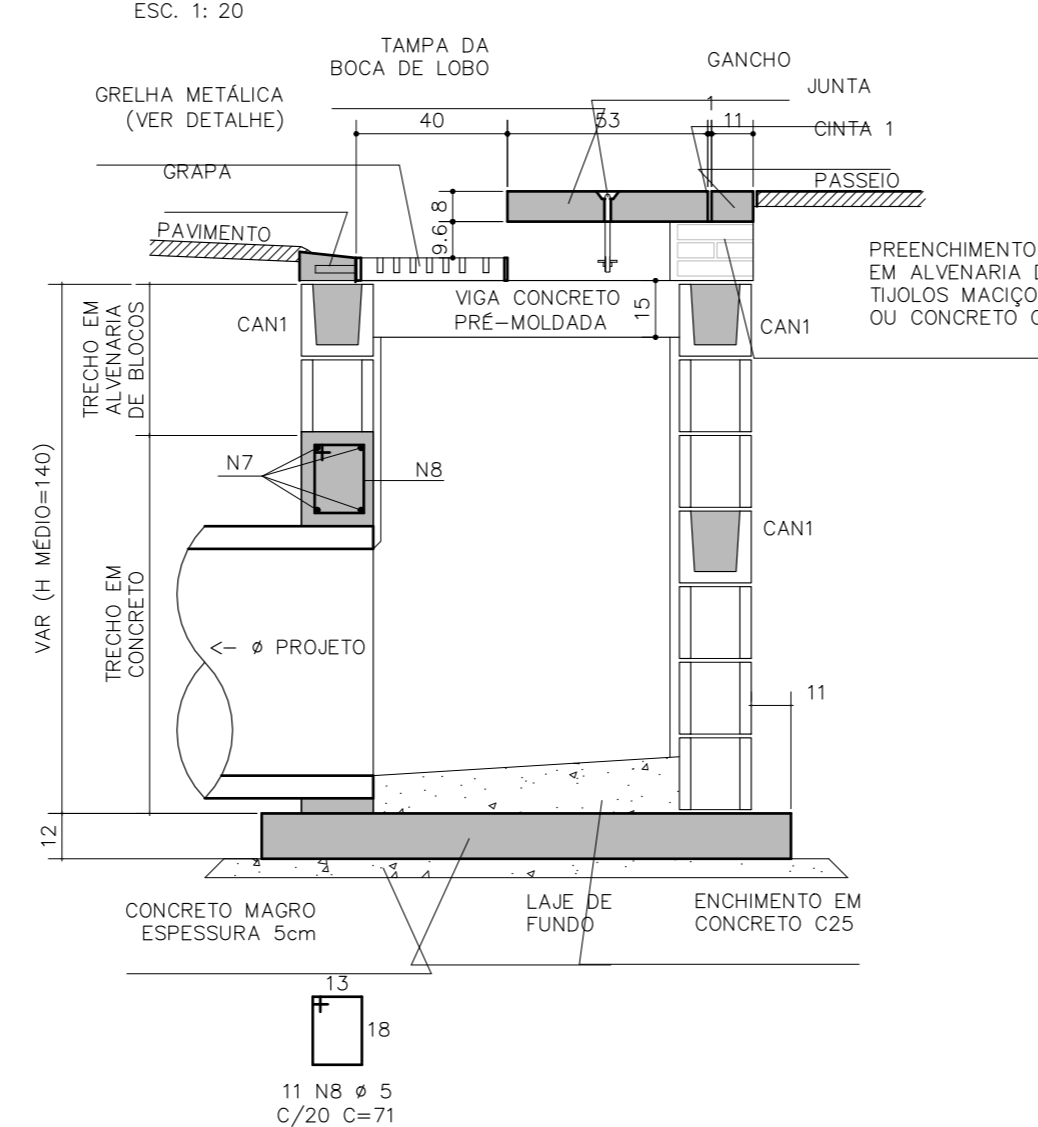
Ø	COMP. TOTAL	PESO kgf.
6.3	137.92	34
8	58.28	23
10	5.28	3
TOTAL		60 kg

Ø	COMP. TOTAL	PESO kgf.
5	40.04	6
TOTAL		6 kg

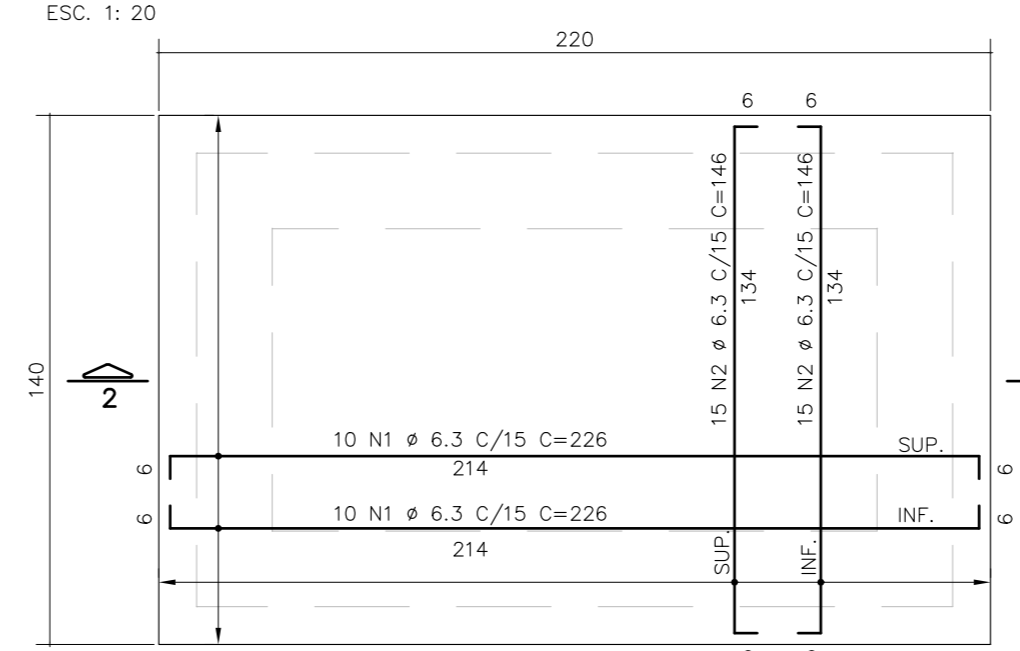
CORTE B-B
ESC. 1: 20



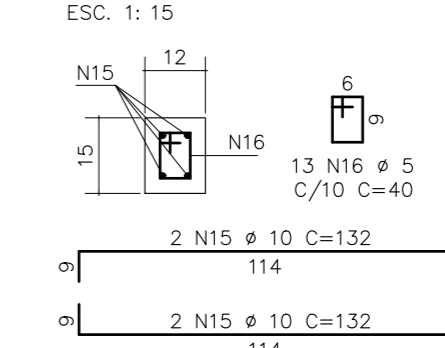
CORTE C-C
ESC. 1: 20



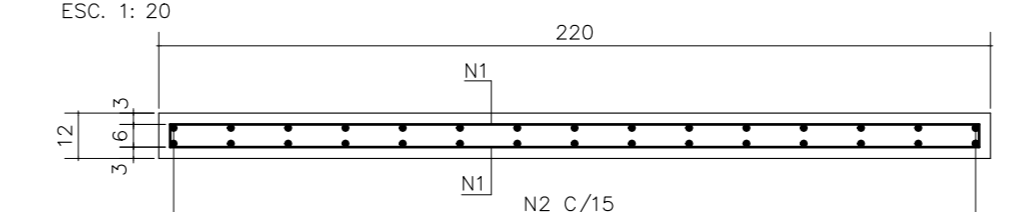
ARMADURA DA LAJE DE FUNDO
ESC. 1: 20



ARMADURA DA VIGA PRÉ-MOLDADA
ESC. 1: 15



CORTE 2-2
ESC. 1: 20



DIÂMETRO DOS PINOS DE DOBRAMENTOS P/ AS BARRAS

BITOLA (mm)	CA-25	CA-50	CA-60
< 20	4 Ø	5 Ø	6 Ø
>= 20	5 Ø	8 Ø	--

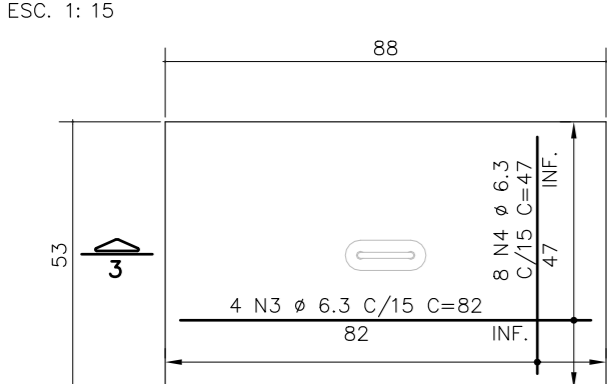
DIÂMETRO DOS PINOS DE DOBRAMENTOS P/ OS ESTRIBOS

BITOLA (mm)	CA-25	CA-50	CA-60
<= 10	3 Ø	3 Ø	3 Ø
10 < Ø < 20	4 Ø	5 Ø	--
>= 20	5 Ø	8 Ø	--

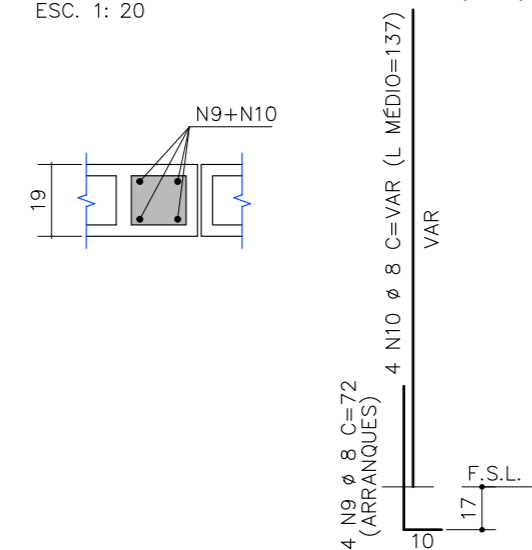
Ø = DIÂMETRO DO ESTRIBO

- ESPECIFICAÇÃO DE MATERIAIS:**
- CONCRETO PARA LASTRO: C10 f_{ck} = 10MPa.
 - CONCRETO PARA LAJES, VIGAS E ENCHIMENTO: C25 f_{ck} = 25MPa, FATOR A/C = 0,55.
 - CONCRETO PARA PREENCHIMENTO BLOCOS E CANALETAS: C20 f_{ck} = 20MPa, FATOR A/C = 0,55. AGREGADO GRÁDIO: BRITA 0, ABATIMENTO 18 ± 2cm.
 - AÇO CA-50 f_{yk} ≥ 500MPa.
 - AÇO CA-60 f_{yk} ≥ 600MPa.
 - COBRIMENTO DA ARMADURA: 3.5cm.
 - BLOCOS E CANALETAS: f_{bk} ≥ 4,5MPa.

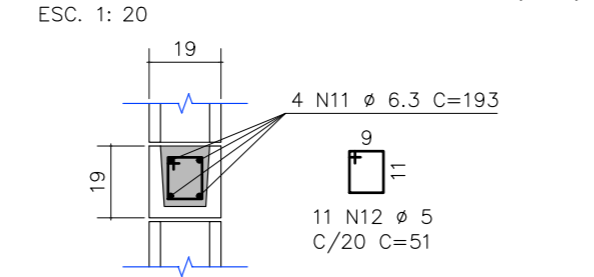
ARMADURA DA LAJE DE TAMPA (2x)
ESC. 1: 15



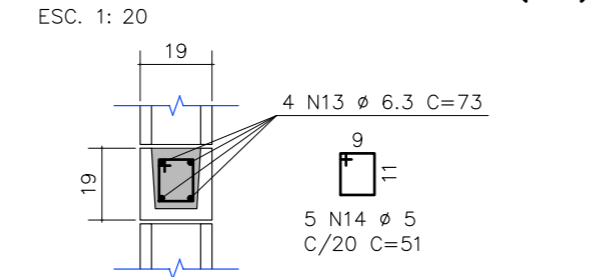
ARMADURA DO BLC (5x)
ESC. 1: 20



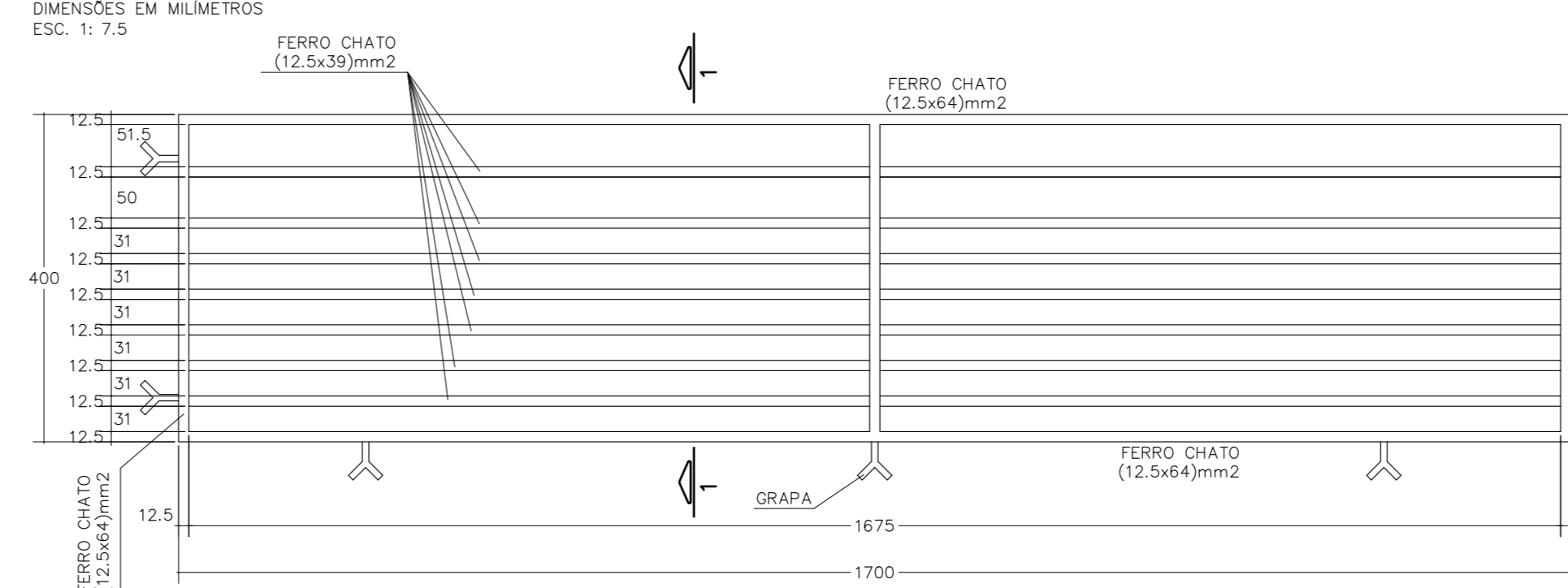
ARMADURAS DA CAN1 (3x)
ESC. 1: 20



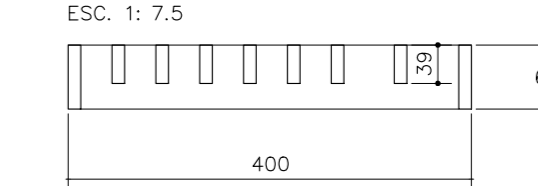
ARMADURAS DA CAN2 (4x)
ESC. 1: 20



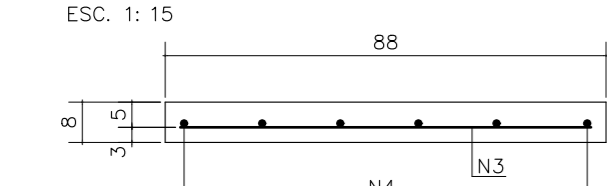
DETALHE DA GRELHA DA BOCA DE LOBO DUPLA
DIMENSÕES EM MILÍMETROS
ESC. 1: 7,5



CORTE 1-1
ESC. 1: 7,5



CORTE 3-3
ESC. 1: 15



REVISÕES						DOCUMENTOS DE REFERÊNCIA				PROJETA: LUIS MIGUEL		ARTICULAÇÃO		CLIENTE: PREFEITURA MUNICIPAL DE MONTE ALTO		
1	ATENDIMENTO AO RELATÓRIO DE PENDÊNCIAS	29/01/18	JAIR DURAN			ELAB.	LUIS MIGUEL	22/06/17								
0	INICIAL	22/06/17	JAIR DURAN			DES.										
Nº	DISCRIMINAÇÃO	DATA	EMITENTE	VERIFICAÇÃO	APROVAÇÃO	CÓDIGO	OBJETO	VERIF.	RESP.TEC.	JAIR DURAN	CREA:	060 140 946 0				