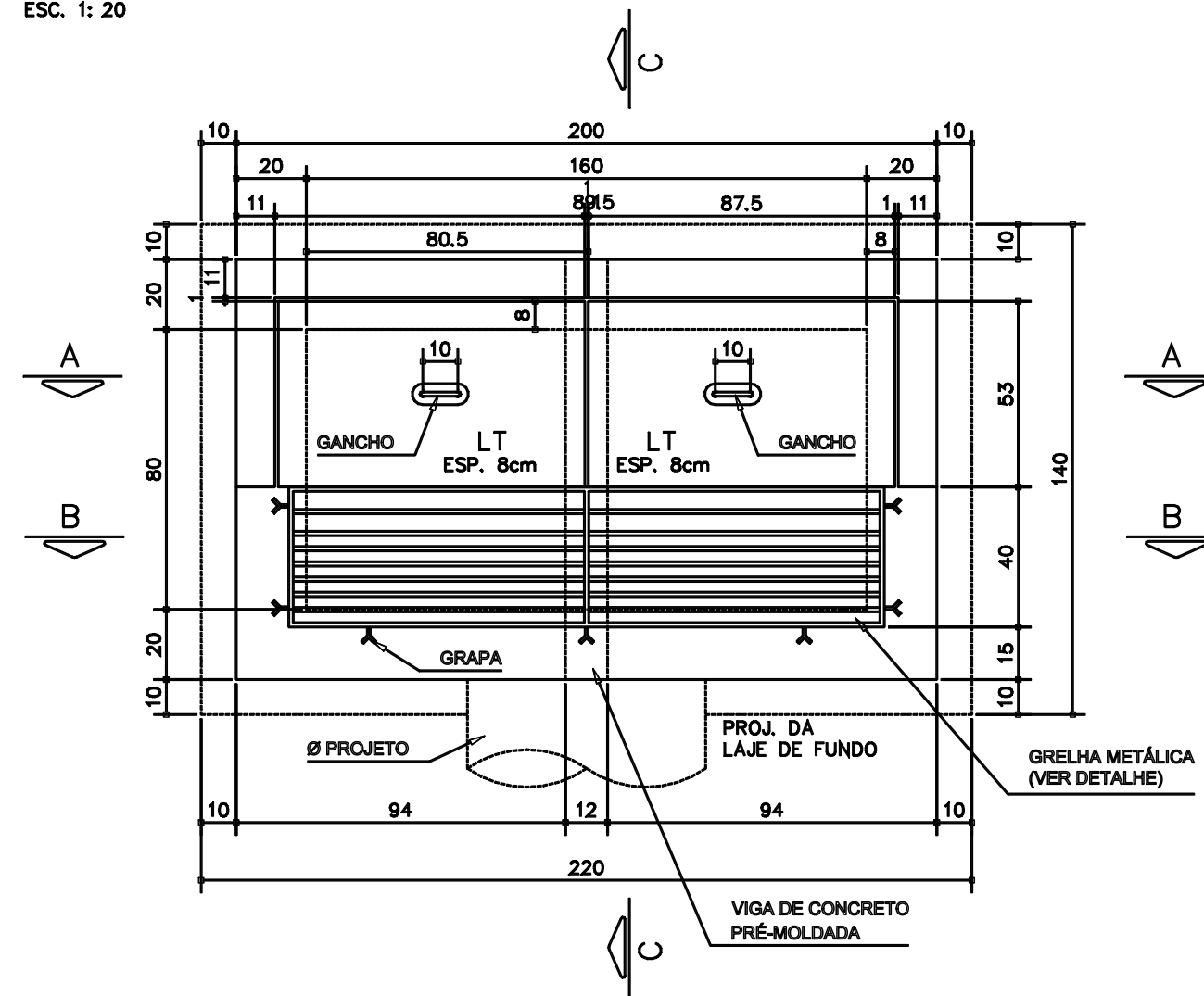
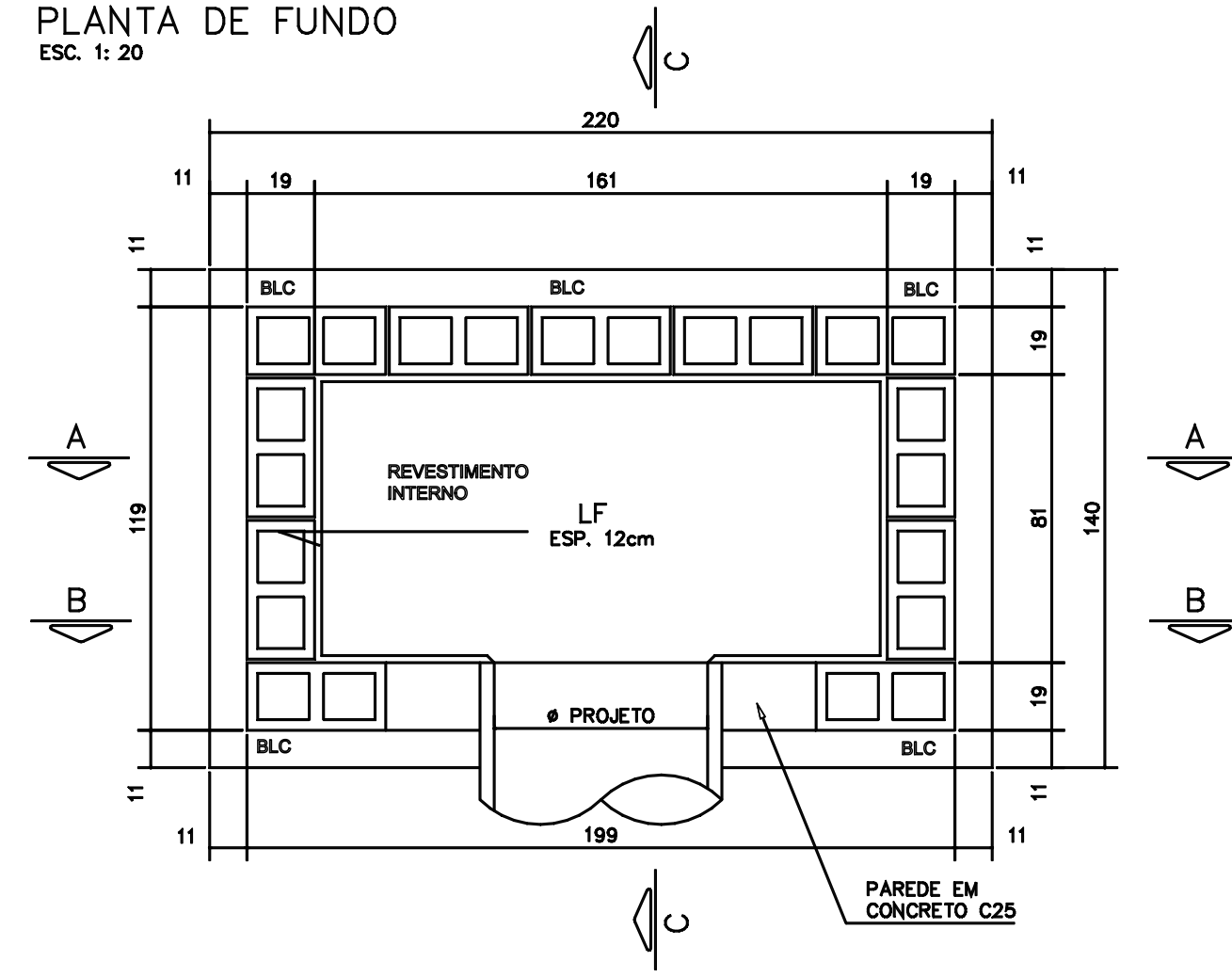


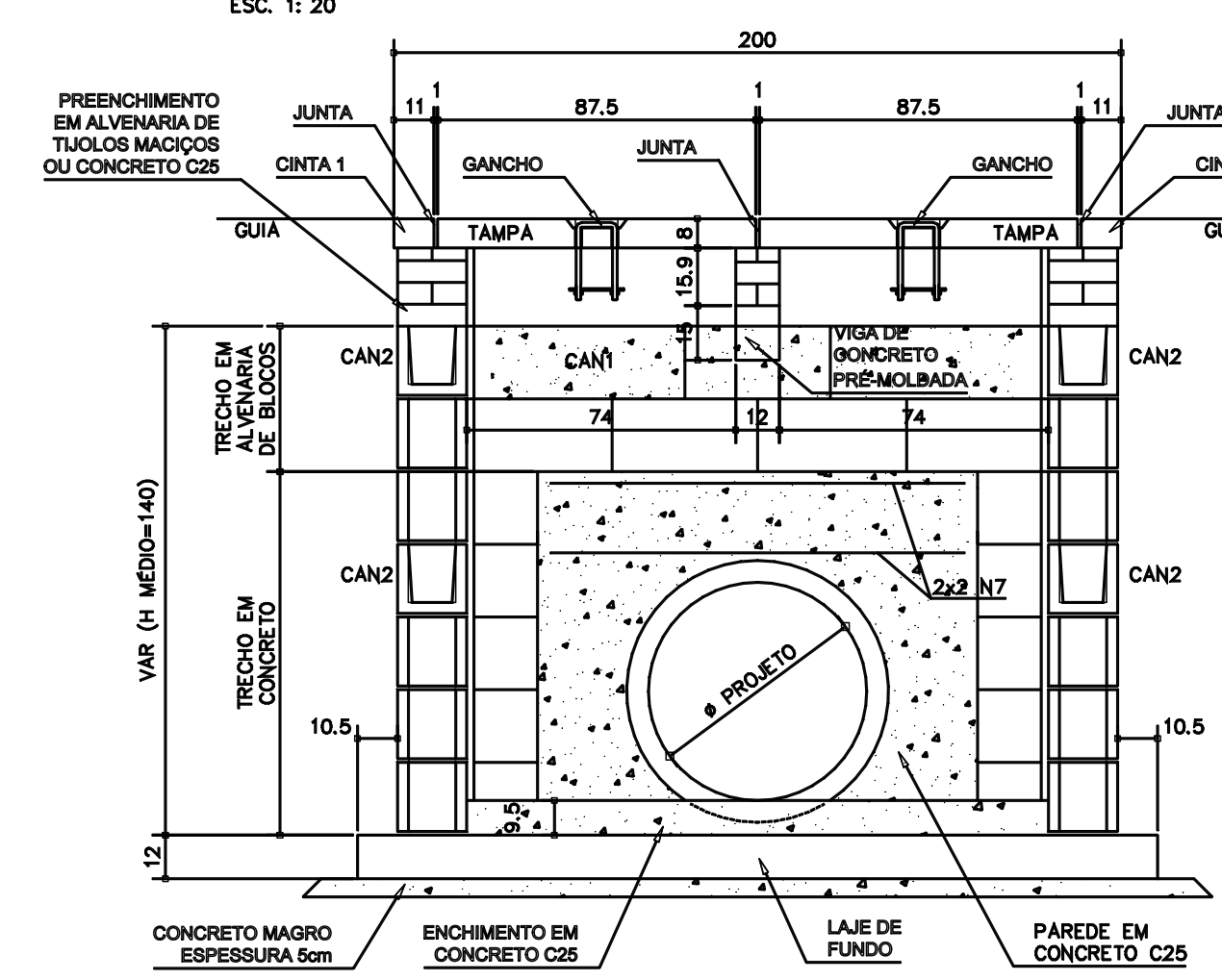
BOCA DE LOBO DUPLA (BLD) - (03x)
PLANTA DE TOPO
 ESC. 1: 20



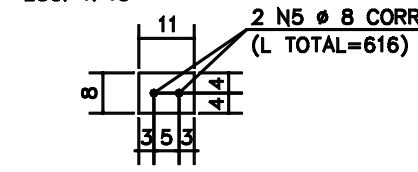
PLANTA DE FUNDO
 ESC. 1: 20



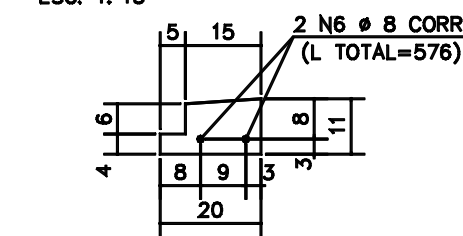
CORTE A-A
 ESC. 1: 20



ARMADURA DA CINTA 1
 ESC. 1: 15



ARMADURA DA CINTA 2
 ESC. 1: 15

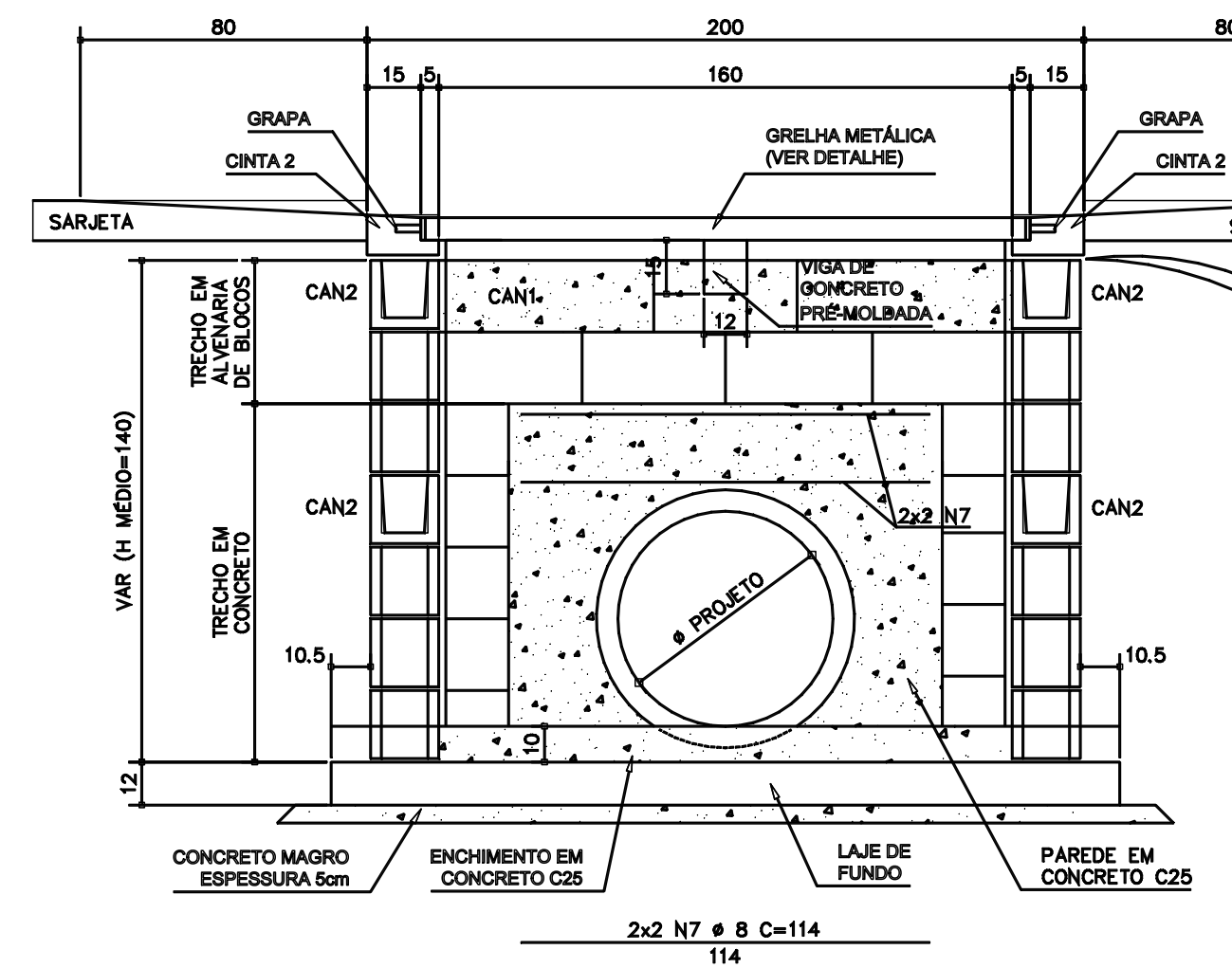


ELEMENTO	N	φ	QUANT.	COMP. UNIT.	COMP. TOTAL
BLD	1	6,3	20	226	4520
	2	6,3	30	146	4380
	3	6,3	8	82	656
	4	6,3	16	47	752
	5	8	2	CORR	616
	6	8	2	CORR	576
	7	8	4	114	456
	8	5	11	71	781
	9	8	20	72	1440
	10	8	20	137	2740
	11	6,3	12	193	2316
	12	5	33	51	1683
	13	6,3	16	73	1168
	14	5	20	51	1020
	15	10	4	132	528
	16	5	13	40	520

φ	COMP. TOTAL	PESO kgf.
6,3	137,92	34
8	58,28	23
10	5,28	3
TOTAL		60 kg

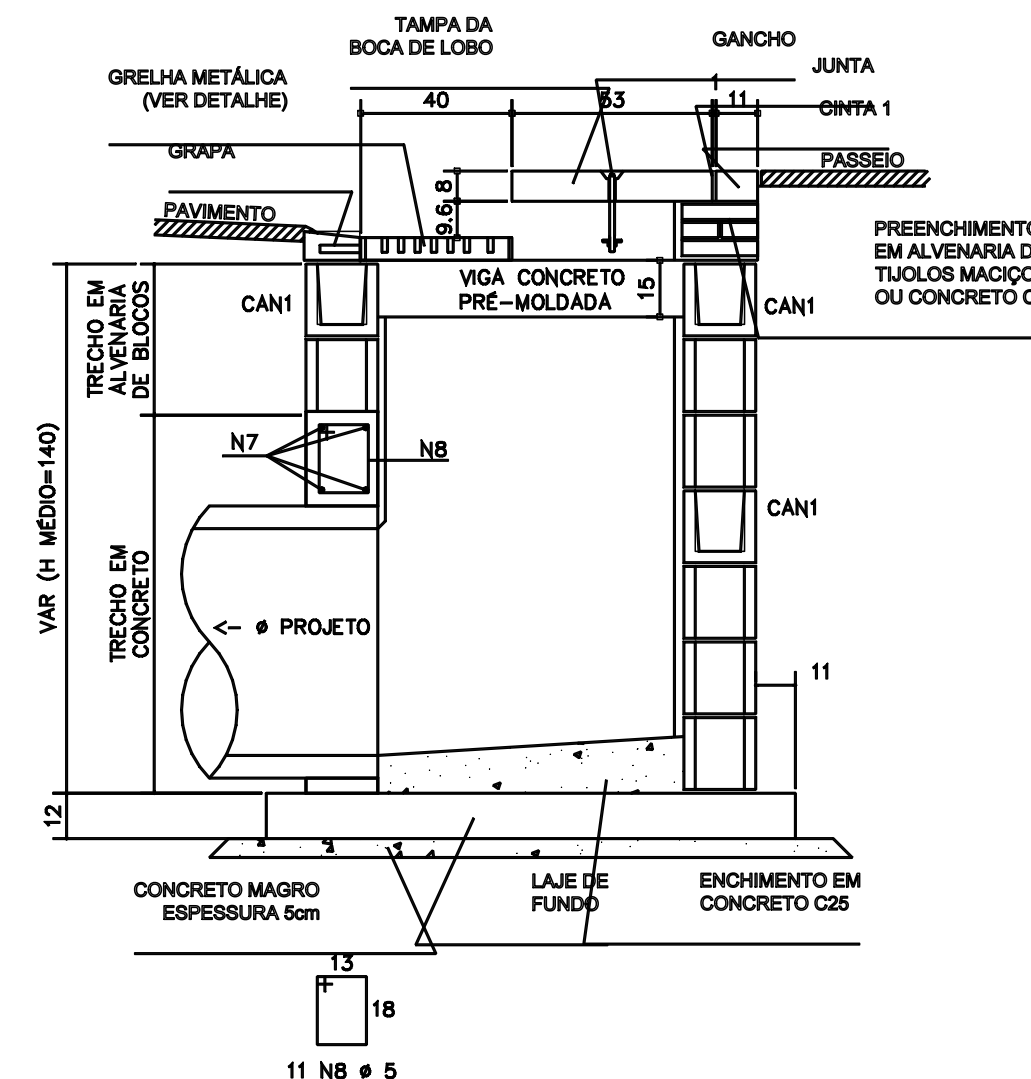
φ	COMP. TOTAL	PESO kgf.
5	40,04	6
TOTAL		6 kg

CORTE B-B
 ESC. 1: 20

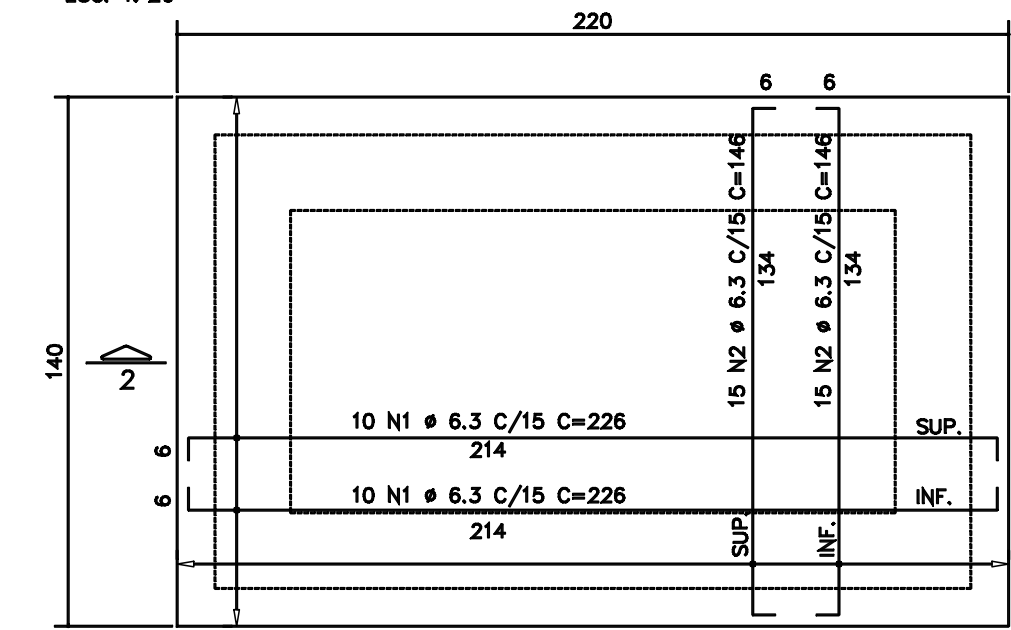


PREVER ARGAMASSA DE CIMENTO E AREIA TRAZO 1:3 ANTES DO ASSENTAMENTO DA CINTA 2, ASSENTAR A CINTA 2 SOBRE A ARGAMASSA AINDA FRESCA.

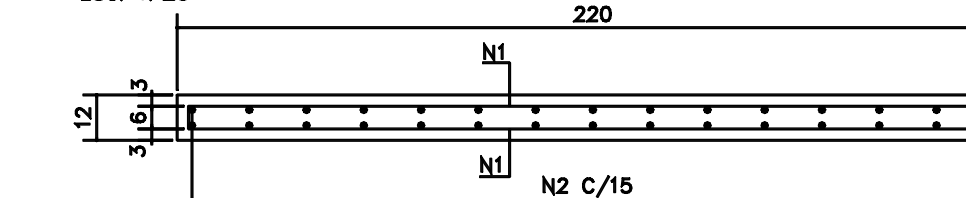
CORTE C-C
 ESC. 1: 20



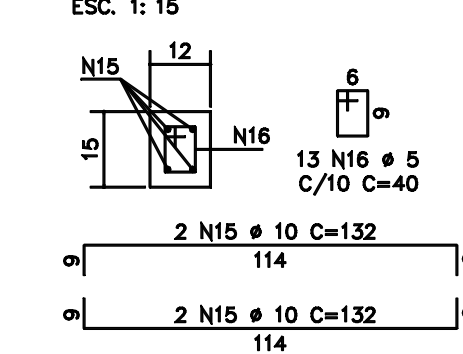
ARMADURA DA LAJE DE FUNDO
 ESC. 1: 20



CORTE 2-2
 ESC. 1: 20



ARMADURA DA VIGA PRÉ-MOLDADA
 ESC. 1: 15



DIÂMETRO DOS PINOS DE DOBRAMENTOS P/ AS BARRAS

BITOLA (mm)	CA-25	CA-50	CA-60
< 20	4 #	5 #	6 #
>= 20	5 #	8 #	---

DIÂMETRO DOS PINOS DE DOBRAMENTOS P/ OS ESTRIBOS

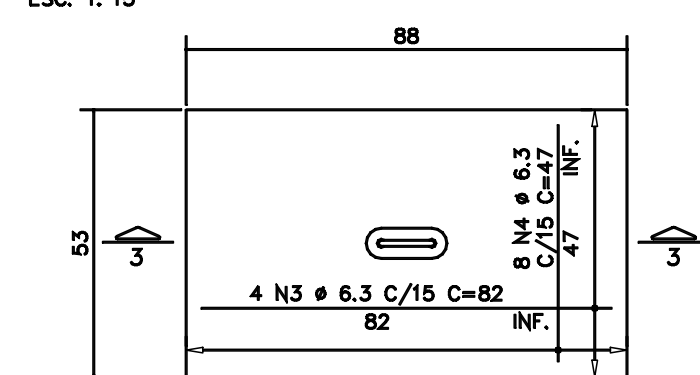
BITOLA (mm)	CA-25	CA-50	CA-60
<= 10	3 #t	3 #t	3 #t
10 < φ < 20	4 #t	5 #t	---
>= 20	5 #t	8 #t	---

#t = DIÂMETRO DO ESTRIBO

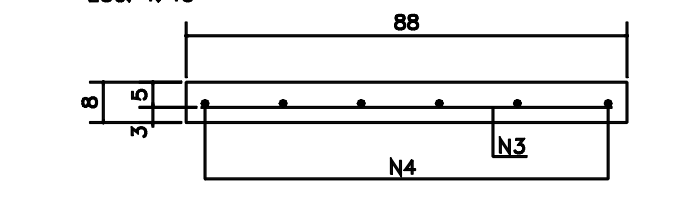
ESPECIFICAÇÃO DE MATERIAIS:

- CONCRETO PARA LASTRO: C10 fck = 10MPa.
- CONCRETO PARA LAJES, VIGAS E ENCHIMENTO: C25 fck = 25MPa, FATOR A/C <= 0,55
- CONCRETO PARA PREENCHIMENTO BLOCOS E CANALETAS: C20 fck = 20MPa, FATOR A/C <= 0,55, AGREGADO GRAUADO: BRITA 0, ABATIMENTO 18 ± 2cm
- AÇO CA-50 fyk >= 500MPa
- AÇO CA-60 fyk >= 600MPa
- COBRIMENTO DA ARMADURA: 3,5cm
- BLOCOS E CANALETAS: fbk >= 4,5MPa

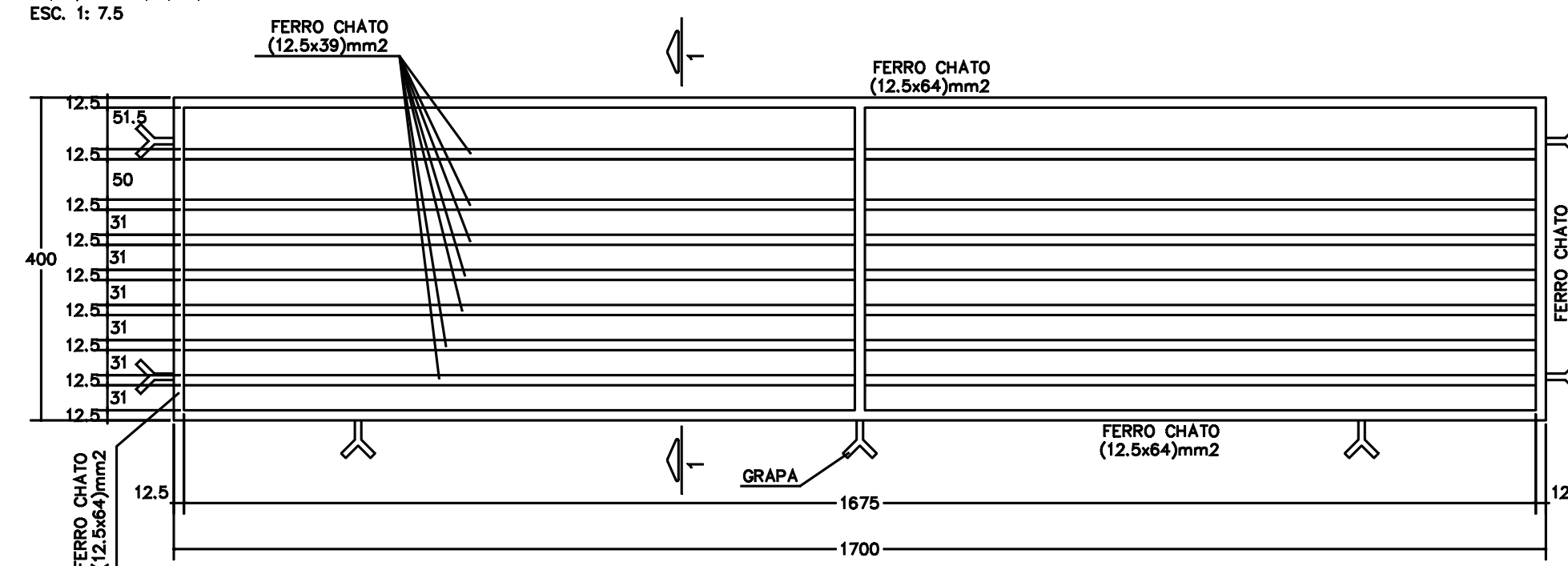
ARMADURA DA LAJE DE TAMPA (2x)
 ESC. 1: 15



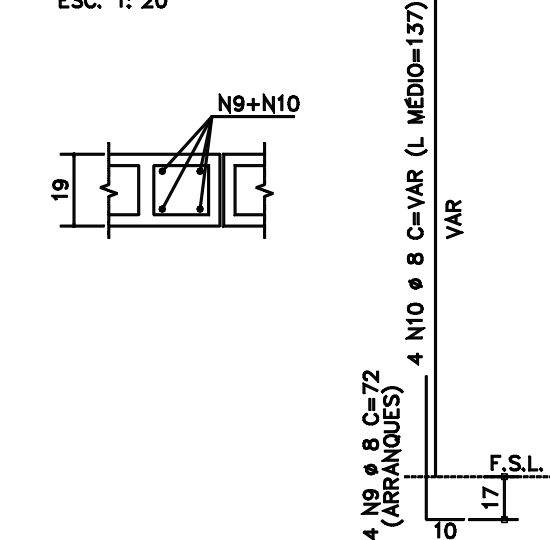
CORTE 3-3
 ESC. 1: 15



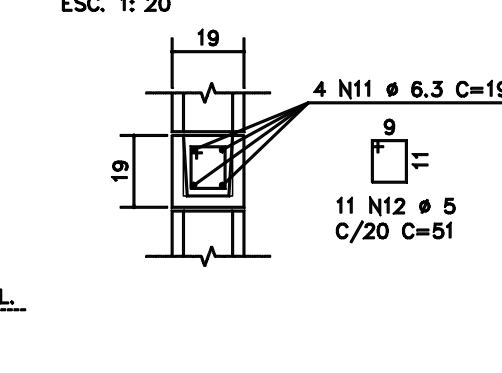
DETALHE DA GRELHA DA BOCA DE LOBO DUPLA
 DIMENSÕES EM MILÍMETROS
 ESC. 1: 7,5



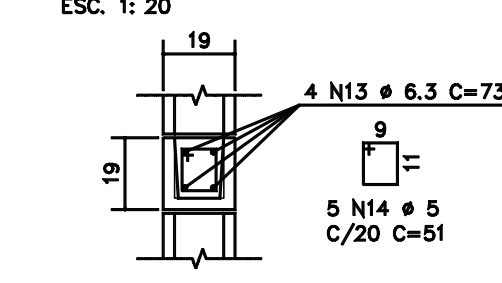
ARMADURA DO BLC (5x)
 ESC. 1: 20



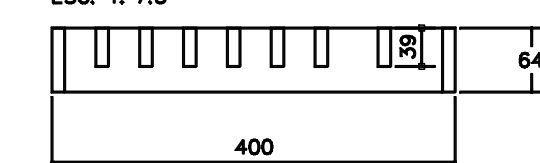
ARMADURAS DA CAN1 (3x)
 ESC. 1: 20



ARMADURAS DA CAN2 (4x)
 ESC. 1: 20



CORTE 1-1
 ESC. 1: 7,5



PAVIMENTAÇÃO ASFÁLTICA
DETALHES BOCA DE LOBO DUPLA

Descrição: PAV 02/04

Objeto: Obras de infraestrutura Urbana no Município de Monte Alto/SP

Proprietário: Município de Monte Alto / SP

Endereço: Rua José Emílio dos Santos, s/nº - Jardim Alvorada

Município: Monte Alto Estado: SP

Emenda Parlamentar Especial: 202031350009 Código: 0903-003051

Autora Projeto: Dulcinea Garbin

Proprietário: João Paulo Zerbini

Gerente Financeiro: Arthur Rogério Lucertini

Projetista: Maria Helena Aguiar Rettondini

Escala: INDICADA Data: 10/07/2020 Data Última Revisão: - ART nº: 28027230210797171