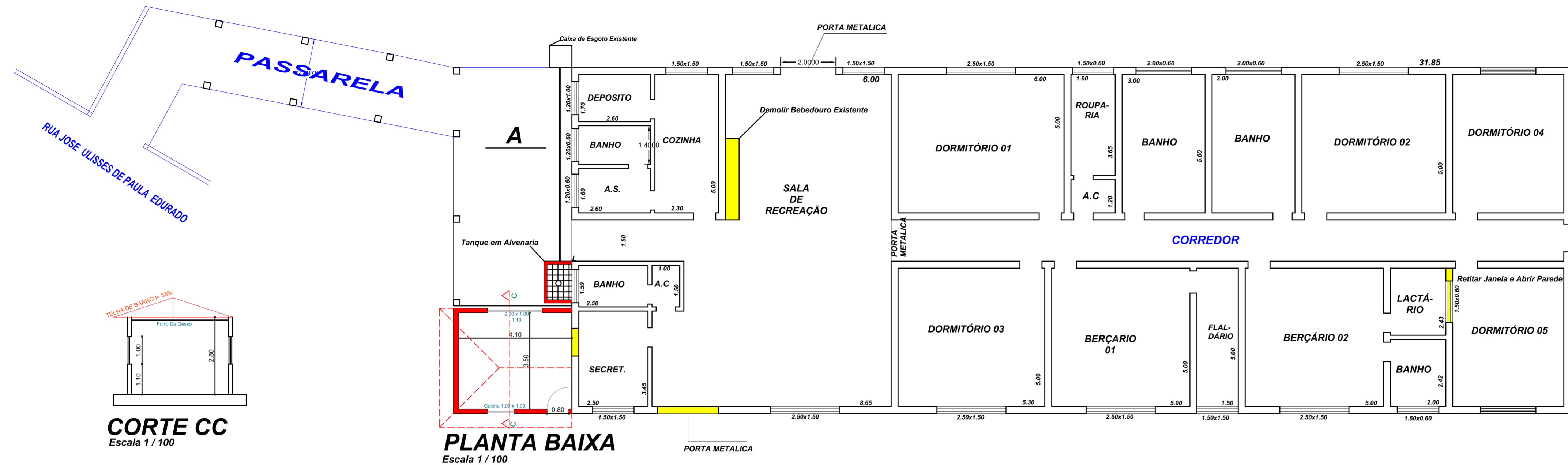
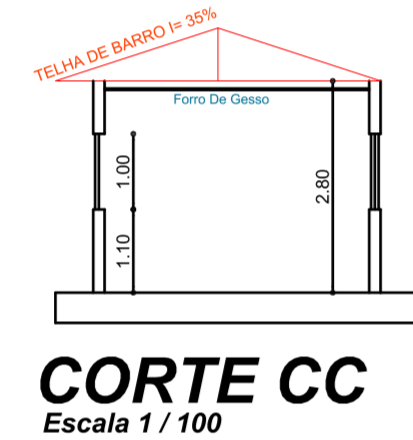


LEGENDA

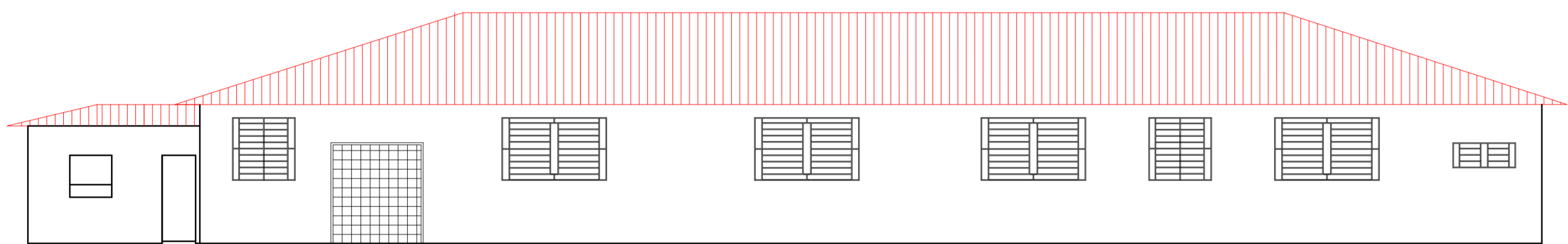
	EXISTENTE
	DEMOLIÇÃO
	AMPLIAÇÃO



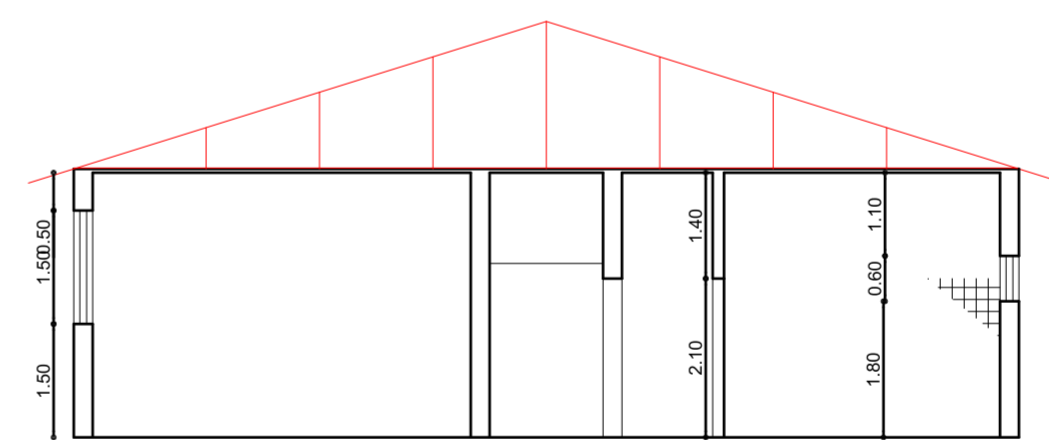
PLANTA BAIXA
Escala 1 / 100



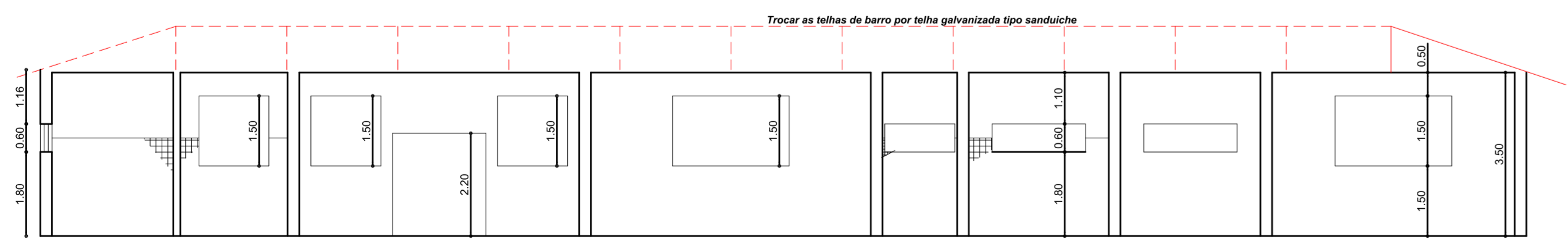
CORTE CC
Escala 1 / 100



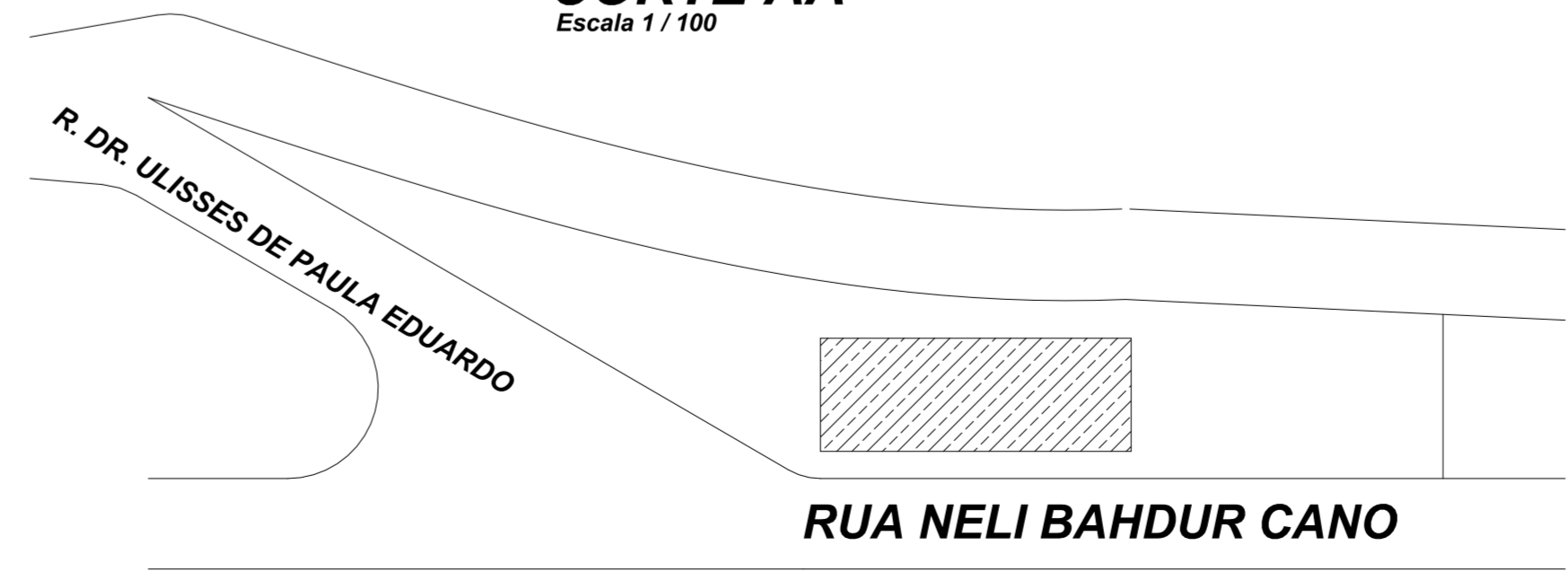
FACHADA
Escala 1 / 100



CORTE AA
Escala 1 / 100



CORTE BB
Escala 1 / 100



PROJETO COMPLETO **F. ÚNICA**

PROJETO COMPLETO DE UM CRECHE

OBJETO

PREFEITURA MUNICIPAL DE MONTE ALTO SP.

PROPRIETARIO

AV. NELI BAHDUR CANO Nº 825 J. ALVORADA

ENDEREÇO

MONTE ALTO SP.

1/100 1/500

ESCALA

FEVEREIRO DE 2022

PREFEITURA MUNICIPAL DE MONTE ALTO
PROPRIETÁRIO (A)

JOÃO PAULO ZERBINATI
ENG. CIVIL - CREA 506 926 344 0
RESP. TÉCNICO

ÁREAS EM M2

TERRENO1.876,17 m²
 AREA EXISTENTE.....451,50 m²
 PASSARELA.....72,18 m²
 A AMPLIAR16,15 m²