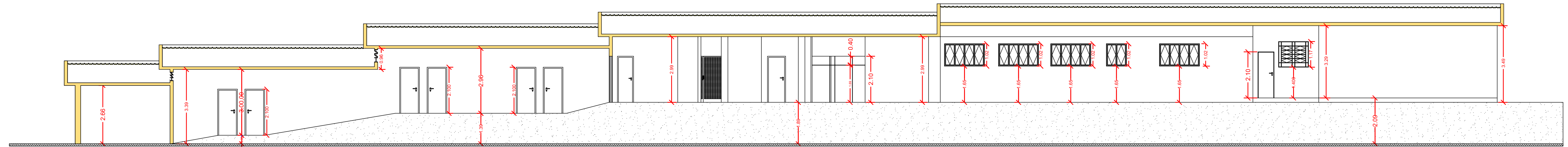
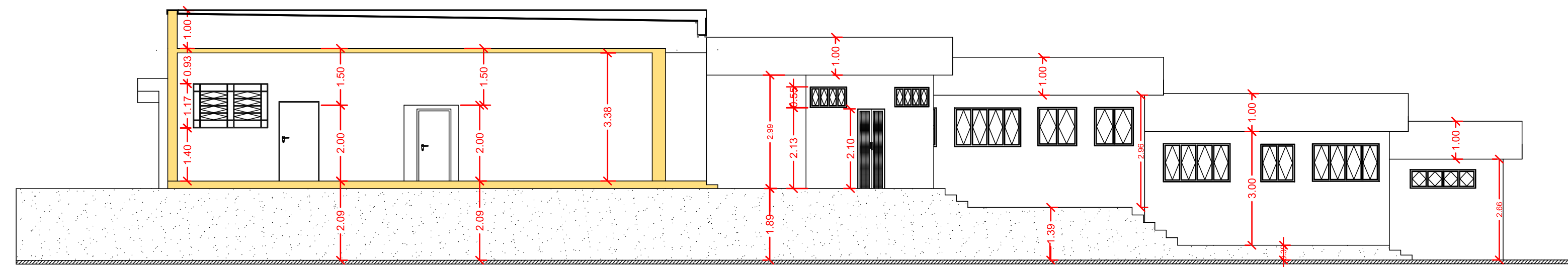


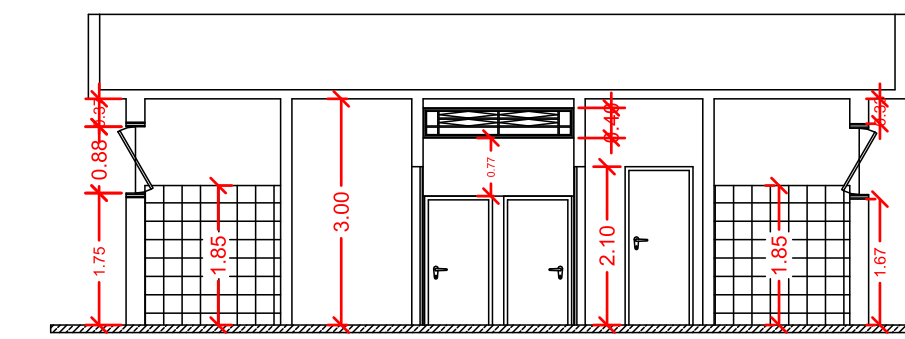
Fachada Frontal



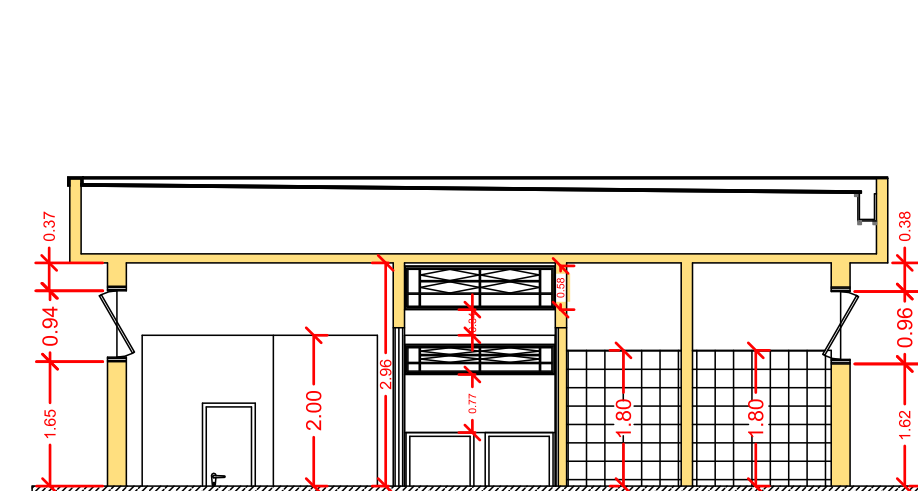
Corte A



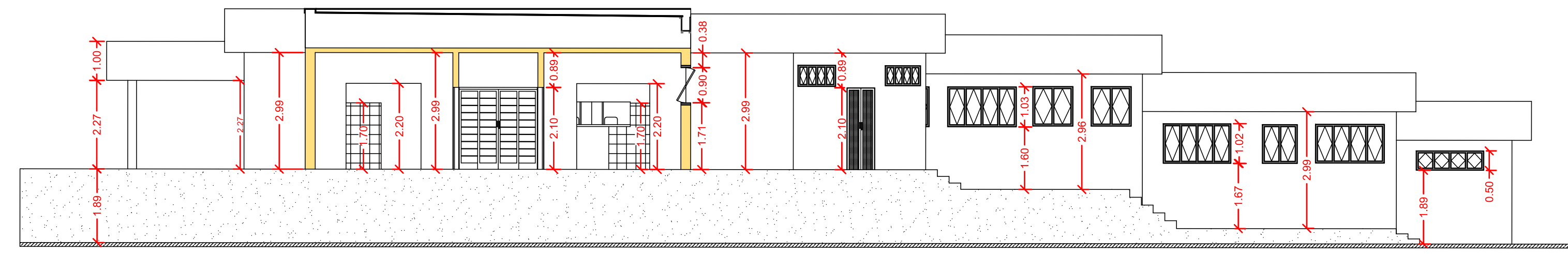
Corte B



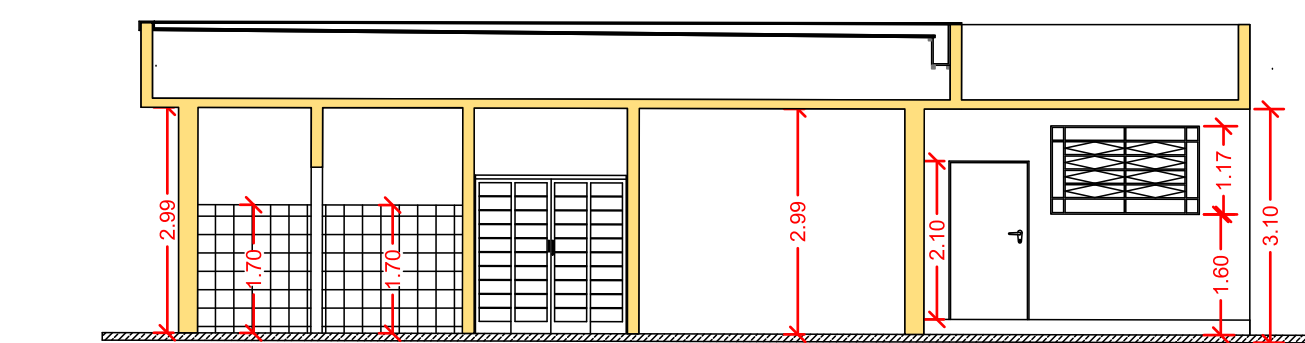
Corte C



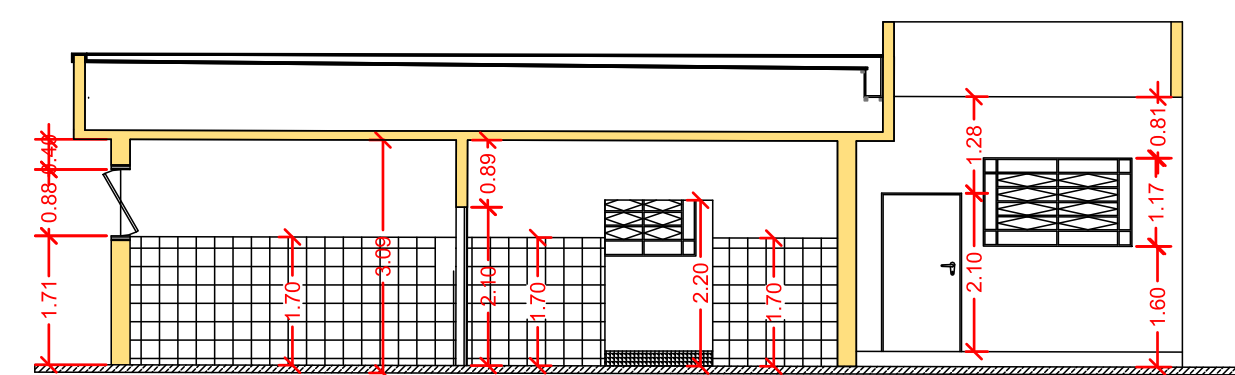
Corte D



Corte E



Corte F




Corte G

Responsável Técnico
João Paulo Zerinatti - CREA 506.926.344-0

Responsável Pelo Uso
PREFEITURA MUNICIPAL DE MONTE ALTO

PROJETO DE REFORMA - NOVO PRÉDIO DO SENAI - SP 02/04
Cortes: AA - GG



Ocupação: E-1 ESCOLA EM GERAL
Local: RUA NHONHÓ LIVRAMENTO, 1324-1416, CENTRO - MONTE ALTO/SP
PROPRIETÁRIO: PREFEITURA MUNICIPAL DE MONTE ALTO/SP
RESPONSÁVEL TÉCNICO: Engº JOÃO PAULO ZERINATTI CREA: 506.926.344-0
ÁREA EXISTENTE: 810,00m² ÁREA REF.: 578,70m² ÁREA TOTAL: 810,00m²
DESENHISTA: LETÍCIA BORGES ESCALA: Indicada DATA: MAIO/2024